



DLA493173 / 532NM-LASER-MODULE
Lambda-Beam Scientific Series Laser

Technical support, sales and service in North America by:



LASER LAB SOURCE

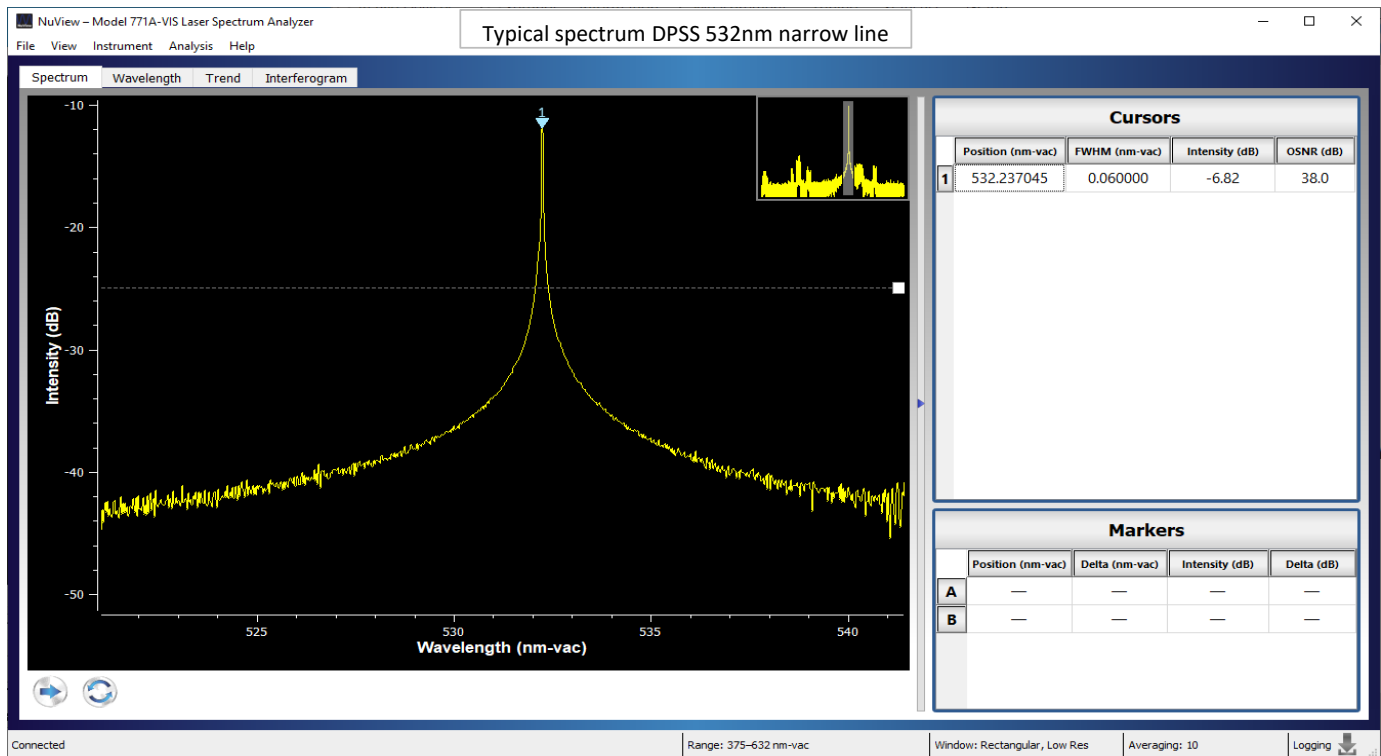
a division of Research Lab Source Inc.

LaserDiodeSource.com | LaserLabSource.com | LaserDiodeControl.com

800.887.5065
contact@LaserLabSource.com



DPSS 532nm narrow linewidth laser system



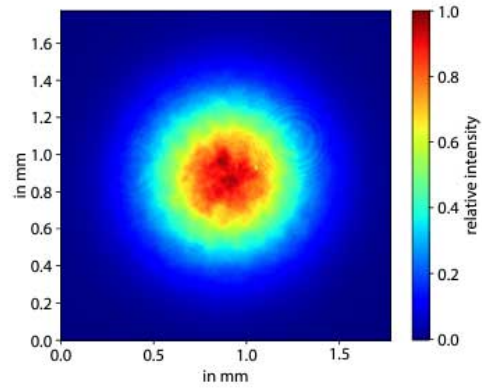
The Lambda-Beam is a narrow linewidth 532nm DPSS green laser which delivers up to 200 mW of low noise output power. These modules are designed for demanding applications that require both high stability and excellent beam quality. They offer user adjustable output power, a USB interface (RS232 optional) and control software.

The included PowerBox power supply module and the control software make set-up and operation of this laser quick and simple. These lasers have a wide range of options including a mechanical shutter and a fiber coupled output adapter.

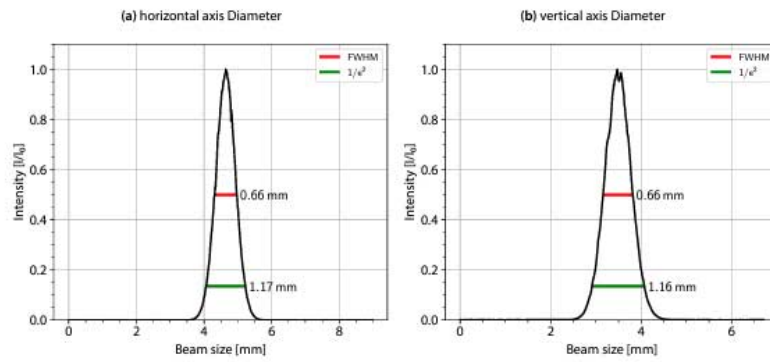
All operating parameters can be set, monitored and controlled from your PC using the included Ltune laser control software. The laser can also be controlled from your own application software. Please request the Operating Manual for a detailed description of the communication protocols.

Wavelength: 532.19 nm
Max. output power: 200.0 mW
Measurement power for test report: 200.0 mW

3D-Beam profile



2D-Beam profile



SPECIFICATIONS

LASER OUTPUT SPECIFICATIONS

- Center Wavelength: 532 nm (\pm 1 nm)
- Spectral Linewidth: < 0.1 nm
- User Adjustable Output Power: 0 - 200 mW
- Spatial Mode: TEM00
- Linear Polarization: > 10:1
- Beam Alignment: < 5 mrad and < 0.1 mm (compared to base mount)
- Pointing Stability: < 5 μ rad/K
- Noise: \pm 1 % (RMS)
- Power Stability: \pm 2 % (8 hours)
- Beam Divergence: < 1.2 mrad
- Beam Diameter: Round Beam, 1.2 mm
- Warm-up Time: 5 seconds

OPTIONS

- Fiber Coupled Output (Request Model Number & Price)
- Fiber Coupled Output Max Power: 70 mW Ex-Fiber
- Opto-mechanical shutter
- Beam diameter correction
- Polarization > 10,000 : 1

USER INTERFACE

- Control Interface: USB
- Control Software: L-Tune Software Included
- Control Software Interface: GUI Virtual Front Panel
- Also Included: LabView Integration, Python Integration

GENERAL SPECIFICATIONS

- Dimensions: 63.5 \times 31.0 \times 32.5 mm (laser head)
- Dimensions: 98.6 \times 31.0 \times 32.5 mm (w/ PowerBox Power Supply)
- Weight 94 g (laser head)
- Weight 163 g (w/PowerBox)
- Operating Temperature: 0 $^{\circ}$ C to 45 $^{\circ}$ C (non-condensing)
- Storage Temperature: -25 $^{\circ}$ C to 70 $^{\circ}$ C
- CDRH Classification 3b

Product Warranty:

This product is offered with a 12 month warranty for all materials and workmanship, all parts and labor. The warranty does not include customer Induced product damage.

Product Manufacturer:

This product is manufactured by RGB Photonics, GmbH. It is offered for purchase in select regions from Laser Lab Source.

RGB Photonics
GmbH Donaupark
13 93309 Kelheim
Germany

