



## 465NM-2000MW-MMF High Power 465nm Laser Diode

### OPTICAL SPECIFICATIONS

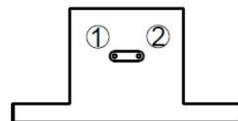
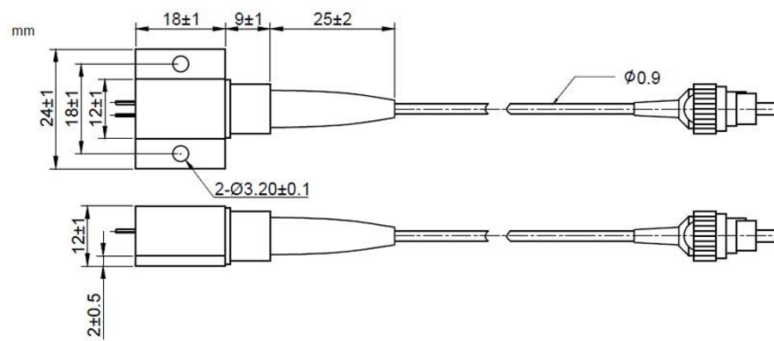
- Output Wavelength: 465nm  $\pm$ 10 nm
- Output Power: 2000 mW
- Spectral Width (FWHM): 2.0 nm
- Wavelength Temp. Coefficient: 0.05 nm/ $^{\circ}$ C
- Laser Type: Fabry-Perot

### FIBER SPECIFICATIONS

- Fiber Type: Multi-Mode Fiber
- Fiber Core: 105  $\mu$ m
- N.A.: 0.22
- Fiber Length: >80 cm
- Fiber Connector: FC/PC (Other Types Available; Inquire)

### ELECTRICAL SPECIFICATIONS

- Threshold Current: 0.4 A (typ)
- Operating Current: 2.5 A (typ)
- Operating Voltage: 4.5 V (typ)



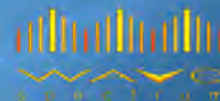
PIN	DEF
1	LD(-)
2	LD(+)



**LASER LAB SOURCE**

world leading products for **Scientists & Engineers**

manufactured by



**PRODUCT SALES AND SERVICE:**

Orders for this product are fulfilled by Laser Lab Source in North America.

**PRODUCT WARRANTY:**

This product is sold with a full one year warranty. It is warranted to be free from defects in material and/or workmanship for a period of one year from the date of shipment. Warranty does not include customer induced damage to the product through mishandling.



Laser Lab Source, a division of Research Lab Source Inc.  
670 S. Ferguson St., Suite 3  
Bozeman, MT 59718 USA

Phone: 800-887-5065

[www.LaserLabSource.com](http://www.LaserLabSource.com)