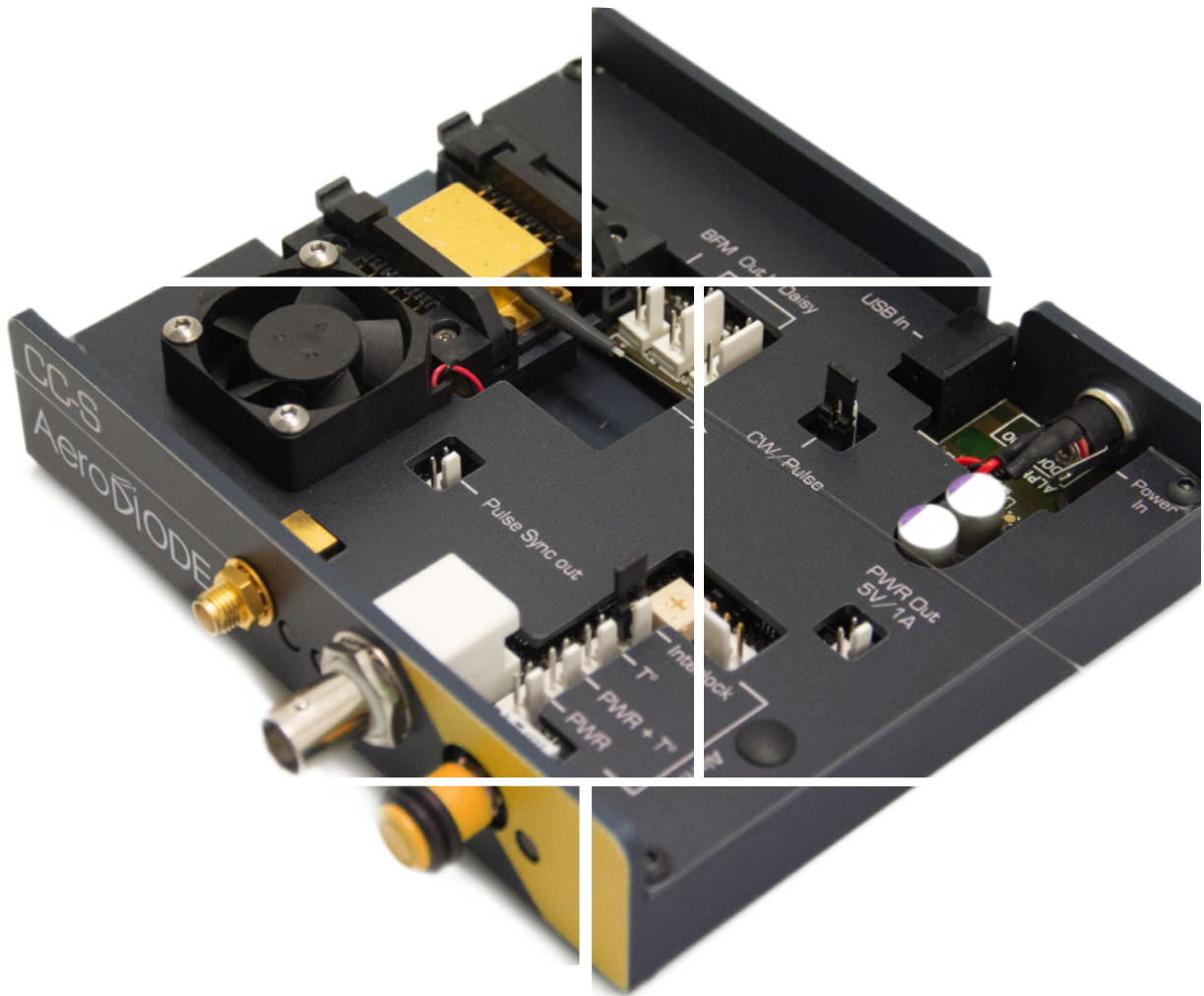


808 nm Laser diode & Turn-key solutions



Aero **Di**ODE

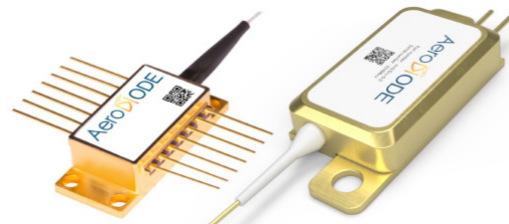
808 nm laser diode

Choose your own fiber-coupled laser diode + turn-key Driver solution

Standard singlemode or multimode laser diodes are offered as stock items or associated with a CW or pulsed open-frame or turn-key laser diode driver.

1st

Choose your laser diode :

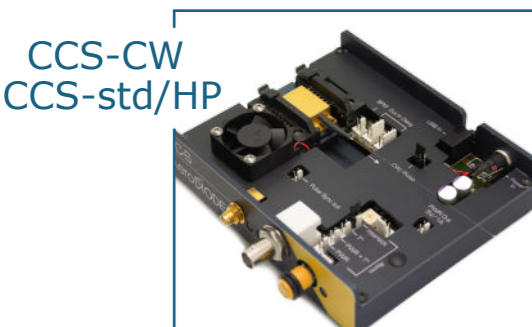


Diode type	Power (CW)	Power (Pulse)	Nominal Levels [typ.]	Technology	Wave-length (nm)	Fiber	Emission BW	Package (mm)
1	250 mW	400 mW	400 mA - 2 V	Butterfly single mode	808 ±3nm (±1nm Typ.)	PM 780	~1 nm	14 pin Butterfly type 1
2	10 W	10 W	3.5 A - 5.5 V	Multimode single emitter		Multimode 100 µm NA=0.22	~3.5 nm	30.9*17*7.7 or 55.21.5*9.2
3	35 W	35 W	6.5 A - 13.5 V	Multimode multi emitter	808 ±4nm (±1nm Typ.)	Multimode 200 µm NA=0.22	~4 nm	66.5*36*10
4	60 W	60 W	7 A - 22.5 V					142*45*20
5	100 W	100 W	9.5 A - 27 V					160*73*22
6	220 W	220 W	11.5A/44 V					222*50*25
7	350 W	350 W	11 A/69 V					

3rd

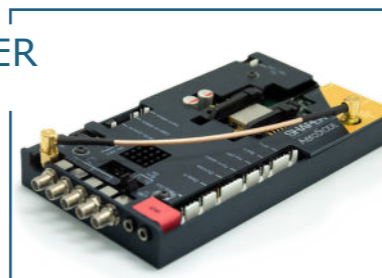
Choose your product form factor : OPEN-FRAME or TURN-KEY

OPEN-FRAME VERSIONS :

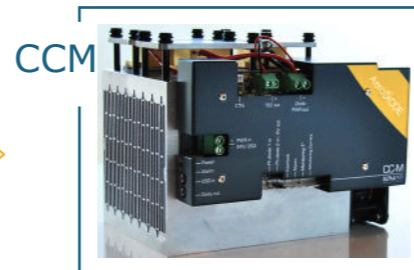


➤ Open-frame driver for CW, std and HP electronics Boards for single mode diodes

SHAPER



➤ Open-frame driver for «Shaper» electronic Board and single mode diodes (user design pulse shape driver)



➤ «CCM» Open-frame driver for Multimode diodes

2nd

Choose your Driver performance :

808 nm Laser Diode version	LASER DRIVER VERSION :			
	CW Driver (for singlemode diodes : «CCS-CW» is the open driver and CCSI-CW is the integrated version)	Pulse & CW Driver (from 1 ns to CW : «CCS» is the open driver and CCSI is the integrated version)	User design pulse shape Driver («SHAPER» open driver from 0.5 ns to 8 µs)	Multimode diode Driver (High power driver for 10 to 150 W diodes : CCM is the open version, CCMI is the integrated version)
1- single mode	250 mW / No	250 mW / 400 mW	No / 400 mW	Not compatible
Output Power - CW / Pulse (Typical values)	2- to 5- Multimode 10W 35W 60W 100W			10 W / 10 W 35W / 35W 60W / 60W 100W / 100W
User design Pulse shape	No	No (On-off only)	Yes	No
Laser diode T°	15 - 50 °C			15 - 40 °C
Pulse duration (Ext trigger)	0.5 ns - CW		0.5 ns - 8 µs	10 µs - CW
Pulse duration (Internal pulse generator)	0.5 ns - 500 ns			No
Typ rise/fall time ; Min Pulse duration	3 (ns/A) ; 1.5 ns		< 1ns/A ; 1.5 ns	few µsec
Internal rep rate adjustment	1 Hz - 4 MHz (250 MHz optional)		1 Hz - 20 MHz	No
Temporal Jitter	< 25 ps		< 2 ns	
Adj. CW offset (pulse regime)	No			Yes (external mode)
Interface/GUI/libraries	USB - Windows 7 / 10 - DLLs - Hexa / Linux - Labview - Python			

TURN-KEY VERSIONS :

CCSI-CW/ std/HP/HPP



➤ Integrated version for CW, std and HP electronics Boards

SHAPER-I



➤ Integrated version for Shaper electronics Board

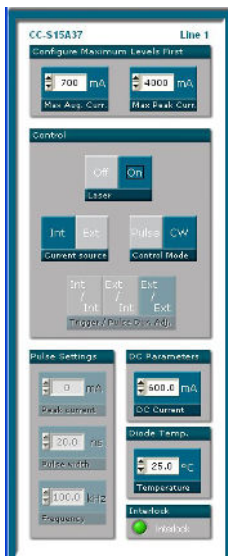
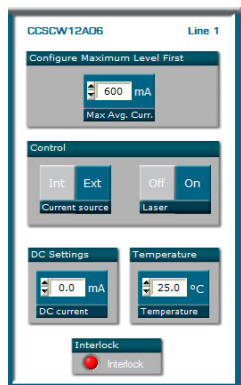
CCMI



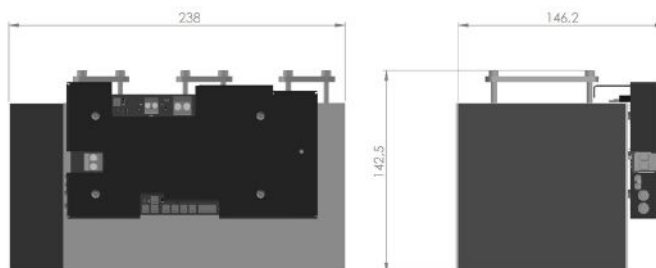
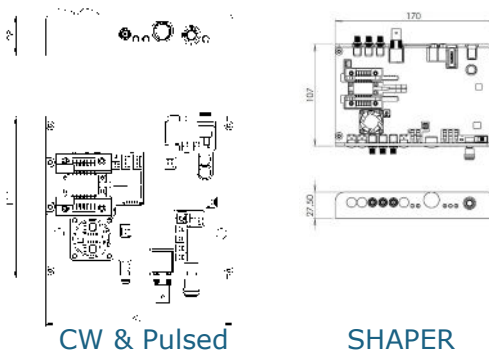
➤ «CCMI» Turn-key driver for Multimode diodes

Technical Specifications

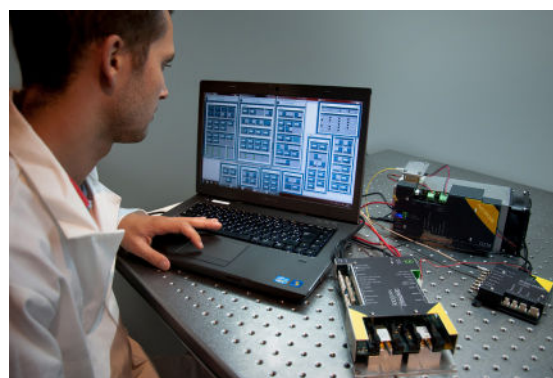
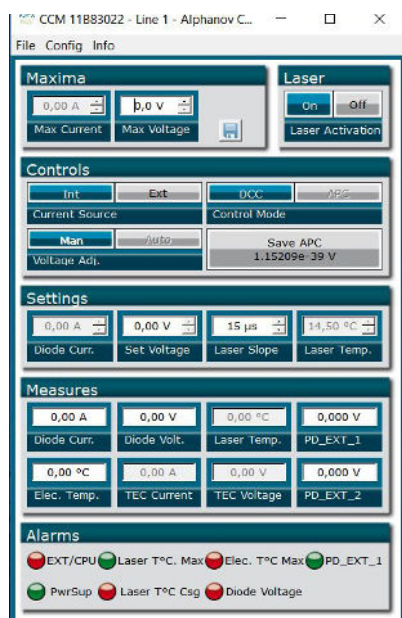
GUI (examples)



Mechanical (examples) :



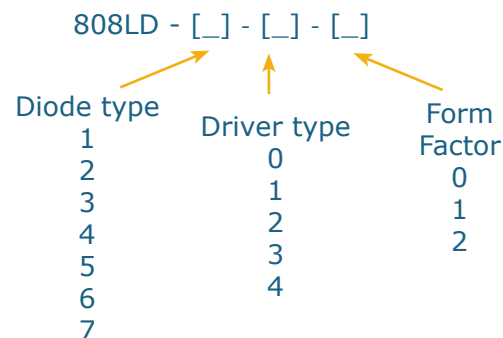
CCM (for Multimode diodes)



Classification :

Name	808LD :
Diode type	1: 250 mW Butterfly singlemode 2: 10 W multimode 3: 35 W multimode 4: 60W multimode 5: 100 W multimode 6: 220 W (diode only - no driver available for such power level) 7 : 350 W (diode only - no driver available for such power level)
Driver Electronics :	0: No driver - laser diode alone 1: CW driver (for CW laser emission only) 2: Pulse and CW driver 3 : SHAPER (User design temporal pulse shape) 4 : High power CCM(I) (for multimode diodes)
Form Factor	0 : No driver - laser diode alone 1: Open-Frame 2: Turn-Key Integrated version

Ordering information :



Photos : ALPhANOV - Version 01-2023